





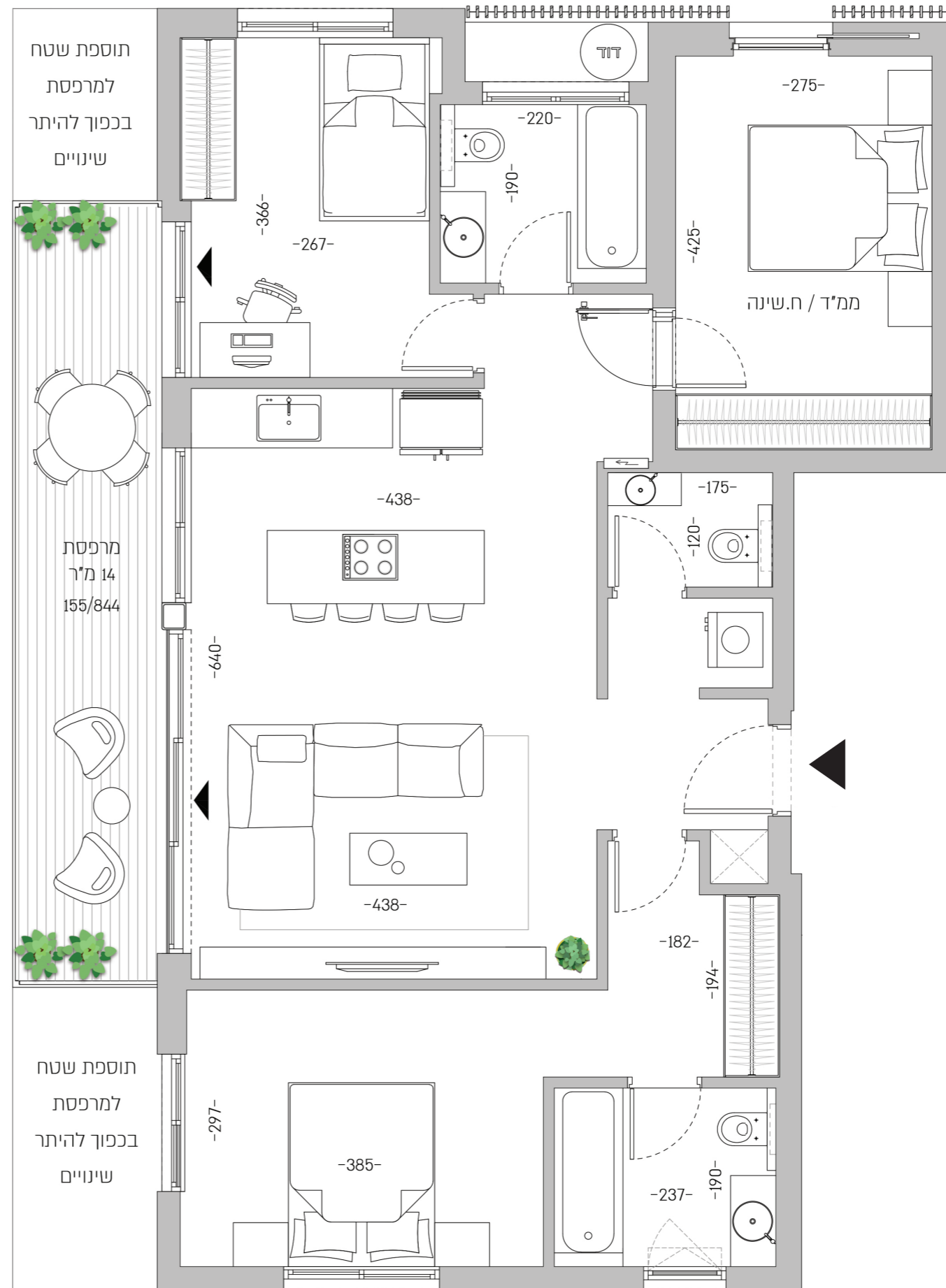
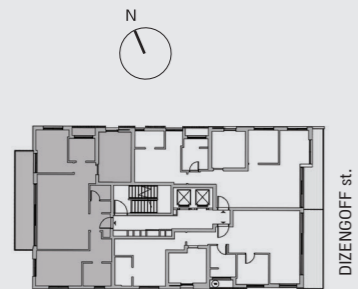
## APT.12 | TYPE D

### 4 room apartment | 3rd floor

Apartment size: 103 m<sup>2</sup> | Balcony size: 14 m<sup>2</sup>  
Air directions: West, North and South | One parking in an underground parking lot

A spacious 4-room apartment with 3 air directions facing the serene western rear. The apartment features a master bedroom and generously sized rooms.

-  A spacious public area
-  Spacious parents' master bedroom
-  Naturally ventilated bathrooms
-  Design flexibility thanks to the corner location of the Mamad (residential secure space)



The plans presented are not final and may change, as a building permit has not yet been received, and in any case are subject to approval of the authorities. The developer will only be bound by the specifications and the final plan that will be attached to the sales contract signed between the parties. Area of the specified apartment is in accordance with the definition of the provisions of the Law on Sale of Apartments, and is calculated according to the area enclosed between the outer walls of the apartment and it includes the area of the outer walls and half of the area of the walls bordering another apartment or shared area. This area does not include areas of balconies, gardens, parking lots, storerooms, or a relative part of the common areas in the building. Gross dimensions before plastering, paint and coating of the accessories and work surfaces marked in the plans are indicated in the plan are for illustration only.